

# Anti-NCR1(NKP46) hIgG1 Antibody(A26-BhlgG1)

## Product information

GM-29003AB-10	10 µg
GM-29003AB-100	100 µg
GM-29003AB-1000	1 mg

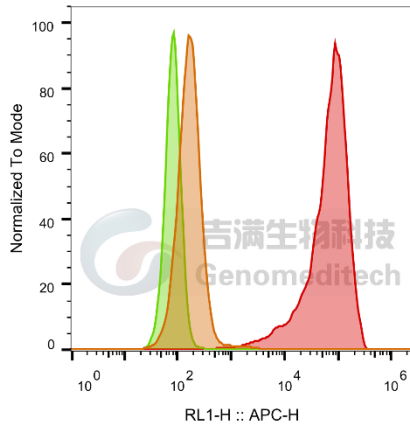
## Antibody Information

Species Reactivity	Human; Rhesus;Cynomolgus
Clone	A26-BhlgG1
Source/Isotype	Monoclonal human IgG1/ κ
Application	Flow cytometry; Activation assay
Specificity	Detects NCR1
Gene	NCR1
Other Names	CD335, LY94, NK-p46
Gene ID	9437(human), 574242(Rhesus), 102115479(Cynomolgus)
Background	Predicted to be involved in cellular defense response; regulation of natural killer cell mediated cytotoxicity; and signal transduction. Predicted to act upstream of or within defense response to virus and detection of virus. Predicted to be located in cell surface. Predicted to be part of SWI/SNF complex. Predicted to be active in plasma membrane. Biomarker of acquired immunodeficiency syndrome; anogenital venereal wart; hepatitis C; and lymphoproliferative syndrome.
Storage	Store at 2-8°C short term (1-2 weeks). Store at ≤ -20°C long term. Avoid repeated freeze-thaw.
Formulation	Phosphate-buffered solution, pH 7.2.
Endotoxin	< 1 EU/mg, determined by LAL gel clotting assay

## Data Examples

### Flow cytometry

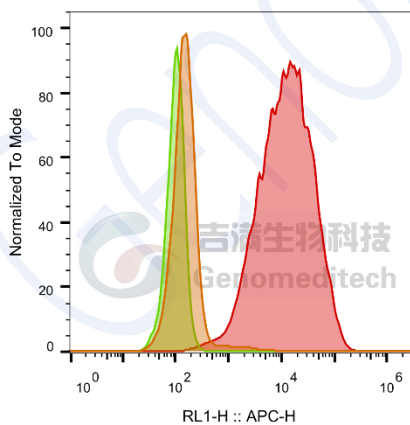
The recommended usage range is 0.5-4  $\mu\text{g}$  per test. H\_Ncr1(NKp46) HEK-293 Cell Line (Catalog # GM-C17926) was stained with Anti-NCR1(NKP46) hIgG1 Antibody (Catalog # GM-29003AB) or isotype control antibody, followed by anti-Human IgG APC-conjugated Secondary Antibody.



SampleID	Geometric Mean : RL1-H
HEK-293 anti-NCR1(NKP46)+APC-2nd Ab	169
HEK-293 H_NCR1(NKP46) H_IgG+APC-2nd Ab	82.4
HEK-293 H_NCR1(NKP46) anti-NCR1(NKP46)+APC-2nd Ab	60067

### Flow cytometry

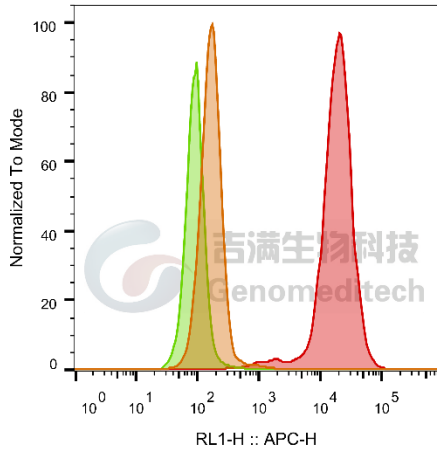
The recommended usage range is 0.5-4  $\mu\text{g}$  per test. H\_Ncr1(NKp46) CHO-K1 Cell Line (Catalog # GM-C17927) was stained with Anti-NCR1(NKP46) hIgG1 Antibody (Catalog # GM-29003AB) or isotype control antibody, followed by anti-Human IgG APC-conjugated Secondary Antibody.



SampleID	Geometric Mean : RL1-H
CHO-K1 anti-NCR1(NKP46)+APC-2nd Ab	155
CHO-K1 H_NCR1(NKP46) H_IgG+APC-2nd Ab	99.9
CHO-K1 H_NCR1(NKP46) anti-H_NCR1(NKP46)+APC-2nd Ab	11563

### Flow cytometry

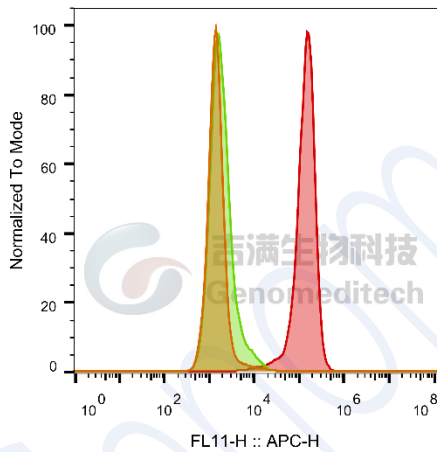
The recommended usage range is 0.5-4  $\mu\text{g}$  per test. Rhesus\_Ncr1(NKp46) HEK-293 Cell Line (Catalog # GM-C17928) was stained with Anti-NCR1(NKP46) hIgG1 Antibody (Catalog # GM-29003AB) or isotype control antibody, followed by anti-Human IgG APC-conjugated Secondary Antibody.



SampleID	Geometric Mean : RL1-H
HEK-293 anti-NCR1+APC-2nd Ab	169
HEK-293 Rhesus_NCR1 H_IgG+APC-2nd Ab	93.3
HEK-293 Rhesus_NCR1 anti-NCR1+APC-2nd Ab	16888

Flow cytometry

The recommended usage range is 0.5-4  $\mu\text{g}$  per test. Cynomolgus\_Ncr1(NKp46) HEK-293 Cell Line (Catalog # GM-C25962) was stained with Anti-NCR1(NKP46) hIgG1 Antibody (Catalog # GM-29003AB) or isotype control antibody, followed by anti-Human IgG APC-conjugated Secondary Antibody.

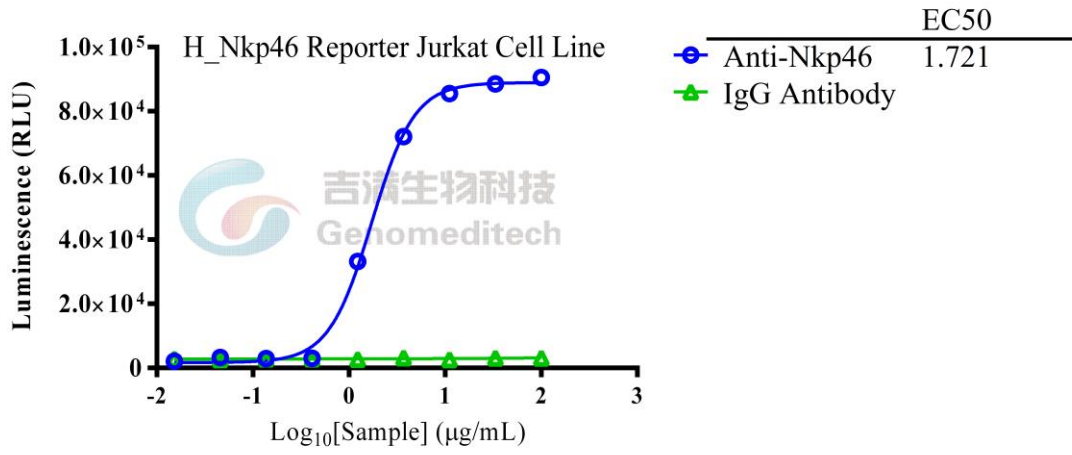


SampleID	Geometric Mean : FL11-H
HEK-293 anti-NKp46+APC-2nd Ab	1507
HEK-293 Cyno_NKp46 H_IgG+APC-2nd Ab	1910
HEK-293 Cyno_NKp46 anti-NKp46+APC-2nd Ab	129669

Fig. FACS

Activation assay

Serial dilutions of Anti-NCR1(NKP46) hIgG1 Antibody (1:3 serial dilutions, from 100  $\mu\text{g}/\text{mL}$  to 15  $\text{ng}/\text{mL}$ ) (Catalog # GM-29003AB) were added into Clear Flat-Bottom Immuno sterilized 96-Well Plates. Next day H\_Nkp46 Reporter Jurkat Cell Line (Catalog # GM-C17954) was added into 96-Well Plates (Anti-NKP46) which were cleaned by Assay Buffer.  $\text{EC}_{50}$  for this effect was 1.721  $\mu\text{g}/\text{mL}$ .



Genomeditech